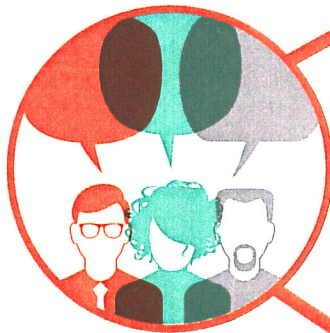




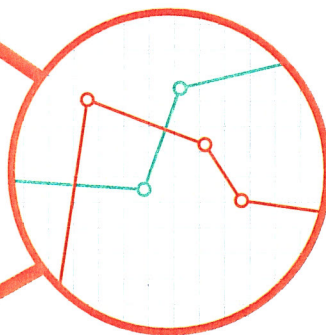
ADVOCACY

- Prevention of Child Abuse and Neglect (POCAN)
- BadgerCare Plus
- Expand School-Based Mental Health



NETWORKING

- Youth Transitioning to Adulthood
- Senior Financial Leaders COP
- Rising Leaders



BEST PRACTICE

- Family and Schools Together
- Trauma Informed Care
- EHR/Outcomes and Benchmarking



PARTNERSHIP

- Thank you for Caring - Campaign on Community Aids
- Crisis Services for Children Network
- DHS 35 Collaboration Website
- Keeping Kids in Families

35
Years of
Service



MORE WAFCA THEN AND NOW

ADVOCACY

- Adoptive Parent Training
- Child Caring Institution Rules
- Labor Peace – Milwaukee
- Type 2 Residential Placement
- Thank you for Caring! – Joint Campaign with WCHSA and others to promote community aids funding
- Milwaukee Joint Venture on Medical Assistance
- RCC rate setting and reserves
- Licensure of mental health professionals
- Mandate for health insurers to cover outpatient mental health
- Tax Exemption for food in RCCs
- Lobby and Lunch: WAFCA CEO and Board Chair day at the Capitol
- Bureau of Milwaukee Child Welfare Implementation
- Funding for Homeless and Runaway Services programs
- TABOR Coalition
- Foster Care rate increases
- Mental Health / Substance Abuse Infrastructure - integrated services project in NW Wisconsin
- Rate regulation advisory committee
- In-home therapy & children's day treatment
- Children with severe emotional disturbance (SED) access in-home therapy without first failing at outpatient therapy
- Physician prescription for mental health therapy MA requirement eliminated
- Family participation in in-home therapy even if child is in a day treatment program
- Mental Health Parity
- Qualified Treatment Trainees reimbursement under Medical Assistance
- BadgerCare Coverage for Foster Children up to age 21
- Extension of Foster Care to Age 21 for children with IEPs
- Funding for post-adoption resource centers
- Office of Children's Mental Health
- Rule revisions on out-of-home care, day treatment and others
- Retained earnings

NETWORKING

- WAFCA Institute – Leadership Retreat in Door County with Families Invited
- WAFCA Leadership Summit
- Youth Transitioning to Adulthood
- Membership Meeting
- Ad hoc committees on levels of care, rules, membership, branding, meeting planning
- Senior Financial Leaders COP
- Leaders Learning from Leaders
- EHR/Outcomes Benchmarking Workgroup
- Social Work Inservice Program Planning Committees

BEST PRACTICE

- Salary and Benefits Survey
- Families and Schools Together
- Social Work Inservice Program
- Home & Community Treatment Teams (POCAN, Children Come First, Wraparound, Comprehensive Community Services)
- Family Team Meetings
- Fostering Results
- Trauma Informed Care

PARTNERSHIP

- Implementation of DHS 35 / Outpatient Mental Health Clinic Rules
- MA services for children- joint efforts with Disability Rights Wisconsin
- Survival Coalition
- Crisis Services for Children Network – collaboration with WCHSA
- Family Impact Seminars
- CANS Training and Certification
- Creation of RCC Forum and CPA Forum
- Educational Services for Children Placed in Foster Care Guidance
- Milwaukee CW Philanthropy Group
- WI Partners for Children
- WACYCP Webinars
- Mental Health America Suicide Training
- Wisconsin Council on Children & Families
- National Organization of State Associations for Children
- Keeping Kids in Families